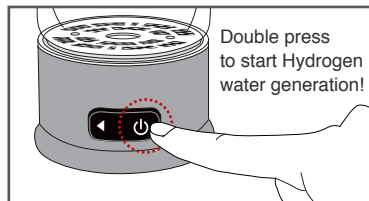


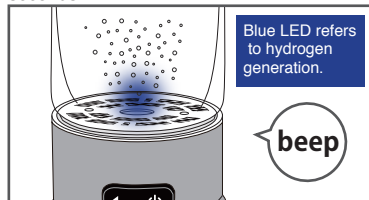
## How to assemble and use the product

Just wait for 4 minutes after pouring tap water or mineral water available on the market! Hydrogen water can be generated even while charging.

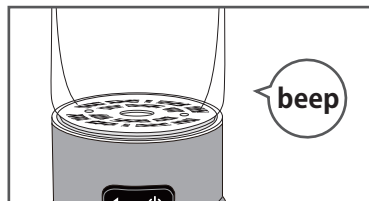


1) Assemble body glass and socket properly and remove the outside lid.

Pour your desired amount of water (within 450ml) and double press the switch button. Hydrogen water generation starts in 3 seconds.



2) There is a "beep" sound and LED blinks twice in blue before hydrogen (bubble) is generated from electrode plate.



3) There is a "beep" sound 4 minutes after generation and it is completed if blue LED turns off. Please enjoy fresh hydrogen water.

Turning Off

Turning Off

When stopping hydrogen water generation in the middle

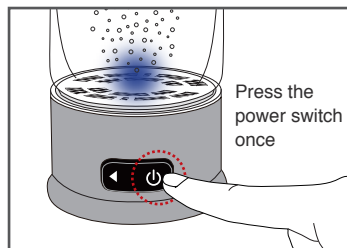
Press and hold the power switch for more than 3 seconds. You hear a "beep" sound and the power will off.

## 10 second regenerating function

Dissolved hydrogen decreases over the time. Please use "10 second regeneration function" to retrieve dissolved hydrogen if more than one hour passed since generation.

1) Hydrogen generation starts in 3 seconds after pressing the power switch once. Please make sure to remove the outside lid when regenerating as well.

2) There is a "beep" sound and LED in the center of generator blinks in blue before hydrogen (bubble) is generated from electrode plate. There is a "beep" sound in 10 seconds and it is completed if blue LED turns off.



※Hydrogen concentration may be low when regenerating after a few hours. 4 minute generation by double pressing is recommended if more than 4 hours passed since generation.

## Troubleshooting

● LED does not "turn on" or there is no "beep" sound even though you turn on the power switch.

· It might be out of battery. Please charge once again and turn on the power switch.

● Hydrogen is not generated even though you turn on the power switch.

· Please charge if blue LED goes off before the specified time.  
· If hydrogen can't be generated even though blue LED is turned on, it might be due to low hardness water such as pure water (reverse osmosis water). Please change the water to tap water and confirm once again that hydrogen is generated.

● It can't be charged (red LED does not turn on)

· Please check that AC adapter is properly plugged into the outlet.  
· Please check that USB code is properly plugged into AC adapter and USB supported devices.  
· Please check that USB code is properly plugged into cable entry of the socket with correct direction.  
· The product can't be charged in case there is no electricity in the outlet or in case USB supported device is not turned on.  
· Voltage may get insufficient if you use other than the supplied AD adapter.  
· LED blinks in red or does not turn on if charging voltage is insufficient. In that case, please change the port to plug in.

● Water leaks

· Please check if cap and socket are closed properly.  
※Water may remain in the gap between body glass and socket. This is not water leakage so please wipe off properly.

Please contact us or the shop where you purchased this product if you still have the problem.

## Product Standards

Size: Diameter: 66 mm (~2.6 in.)

Height: 245 mm (~9.6 in.)

Weight: 410 g (~14.5 oz)

Capacity: 450 ml (~15.2 fl oz)

Materials: polypropylene, stainless steel, glass, titanium-platinum coating, silicone, etc.

Attachments: USB cord with AC adapter (7.4V 950 mA/h)

Hydrogen Concentration: 0.8ppm~1.277ppm (Can depend on water quality) (\*1)

Power: Power supply: AC 100 V ~ 240 V 50 Hz / 60 Hz

Output: DC 5V 1.2A

Battery: Lithium Battery (Battery Capacity: 3.7V 1450mAh)

Recharge Time: Approx. 360 min.

Battery Life: 4 min. mode ... Approx. 20 times (\*1,2)

(\*1: Can depend on water quality)

(\*2: If you use hard water, the number of generation can be around 10 times)

MADE IN JAPAN



B-1501 Series

User's Manual

# H<sup>2</sup>plus

Rechargeable Handheld Hydrogen Water Generator

Thank you very much for purchasing this product. This rechargeable handheld Hydrogen Water Generator enables you to drink Hydrogen Water anytime and anywhere. Please read this User's Manual carefully and use the product properly to ensure a long, comfortable and safe use of this product.

## To use this product comfortably

- Please charge the product before use.
- Please wash the product once before use although cleaning and hydrogen generation test are conducted before shipment.
- Mineral and the smell of chlorine may accumulate in a top lid depending on the type of water and the environment of tap water. If you mind the smell, you can pour water into a cup to enjoy the tasty hydrogen water.
- The container is 100°C heat-resistant, but using hot water of over 50°C makes the body glass hot and may result in danger.
- Concentration may vary depending on water quality. High hardness water can generate more concentrated hydrogen water.
- Low hardness water like pure water (reverse osmosis water) may result in less concentrated hydrogen water.
- Please wash the inside every day to ensure a hygienic use of the product.
- Pouring more than 450ml water and generating with an outside lid closed may cause explosion by high pressure and result in danger. Please make sure to remove an outside lid when generating hydrogen water.

## Attention



### Warning

Ignoring warning and using the product inappropriately may result in a danger or serious personal injury (death, serious injury).



Prohibition

Please refrain from heating the product in microwave and putting it in the dish washer. Please also refrain from freezing the product in the freezer. These actions may lead to burst, electrical shock, and explosion of a battery. \*Please do not freeze the product.



Keep Out Water

Please refrain from washing AC adapter and USB code. This may lead to electrical shock, short circuit, and fire.



Prohibition

Please refrain from bundling, twisting, damaging, processing, pulling, and distorting AC adapter and USB code, and do not put or insert the heavy stuff on them.



Keep Out Water

Please refrain from using wet hands when charging. Please wipe off water around the cable entry in generator and charge in the area where not usually affected by water. This may lead to electrical shock, short circuit, and fire.



Unplugging AC adapter and USB code

Should AC adapter and USB code be damaged or overheat, or should you notice abnormal phenomenon in generator such as unusual smell and sound, stop operation immediately and unplug AC adapter and USB code from the outlet. This may lead to electrical shock, short circuit and fire. Please contact the shop if you notice something abnormal.



Must do

AC adapter should be AC 100 to 240V and use it with the power outlet. AC adapter's plug should be the same shape as the outlet. It may lead to electrical shock, fire, electric leakage, and explosion.



Must do

Please do not use, store or put the product in high temperature such as fire, direct sunlight or inside a car in summer. This may lead to electric leakage, fire and explosion.



Must do

Please make sure to place the product in a flat place and remove the outside lid when generating hydrogen water. The container may explode by the gas produced.



Modification Prohibited

Please do not disassemble, repair or modify the product intentionally. This may lead to fire and electrical shock. Please contact the shop when repair is necessary. This may lead to electrical shock, fire, electricity leakage, and explosion.



### Attention

Ignoring warning and using the product inappropriately may result in damage or man-made disaster (injury).



Attention

Please check whether outside lid and socket are closed properly and water is not leaking when carrying the product. Please do not lay it down but rather put it in an upright position when carrying the product in a bag. Please keep out water.



Attention

Please do not give strong shock to the product. Its body is made of strong glass, but strong shock may result in damage or injury.



Attention

Please use the supplied AC adapter for this product. Please remove AC adapter from the outlet if you do not use the product for a long time. This may lead to electrical shock and fire and may result in product failure.



Attention

Please clean body glass and generator separately. Please do not use water, benzol, alcohol, and thinner for cleaning. This may lead to electrical shock and fire, and may result in product failure.



Must do

When cleaning the generator, please make sure to close the silicon of the cable entry, protect the area with cloth, and wash the only generator on the top lightly with water or wipe off with soft sponge. Please take care to prevent water from getting inside the cable entry. This may lead to electrical shock and fire, and may result in product failure.



Attention

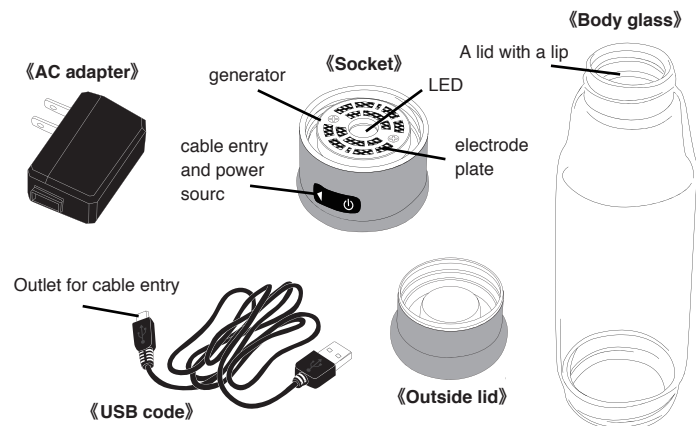
Please do not drink Hydrogen water that was not used or kept for a long time as it may cause food poisoning.



Attention

Generating beverage other than water may damage the product. We shall not be liable for the damage caused by not using water. Please kindly use at your own risk.

## Names of the parts



## Maintenance

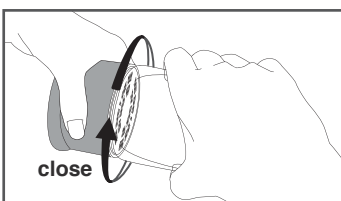
### Please wash the product before using for the first time.



1) You can separate the product into outside lid, body glass and socket for washing.

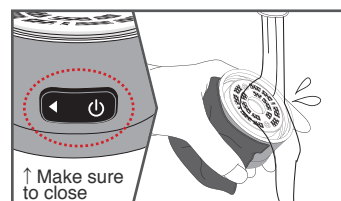
Please use mild neutral detergent to wash the outside lid and body glass.

**Please do not wash socket completely. It may lead to electrical shock and product failure.**



3) "Leakage" may occur if water is left in the gap of the socket when assembling socket and body glass.

**Please wipe off the gap of the socket properly and assemble firmly.**



2) Please close silicon of the cable entry properly, protect it with cloth and wash only the generator lightly with water or wipe off with soft sponge. (mild neutral detergent can be used)

**Please take care to prevent water from getting inside the cable entry.**

•Please wash with soft sponge.  
•Please check that body glass and socket are securely attached. This may result in leakage.  
**<If you think that hydrogen is less generated>**

•Calcium or dirt may be adhered in the electrode plate. Dissolve lemon juice or citric acid and wait for 30 minutes. If problem still remains, please repeat it several times.

**\*Please refrain from soaking the socket. Please make sure to assemble body glass and socket.**

## How to charge

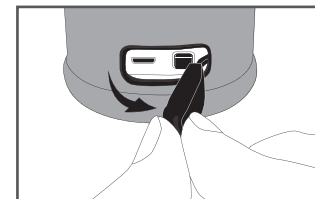
### Charging time varies depending on the shipment status, so please charge before the initial use.

\*If there is no remaining battery, the time required for full charge shall be around 3 to 4 hours.

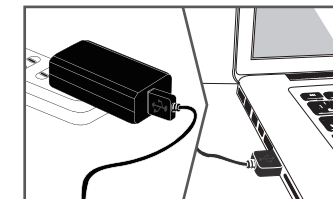
\*You can use around 20 times after full charge.

(\*The number of use varies depending on charging status and water quality)

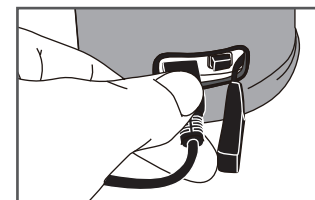
\*Battery with less electrical discharge is used, but it may become unavailable if not charged for a while.



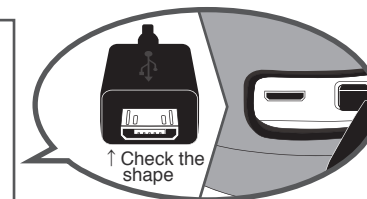
1) Remove silicon at "▶" part on the left side of power switch to the right side. Please do not pull strongly as it can cause silicon to be broken.



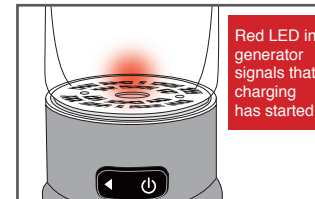
2) Connect the supplied USB code to the supplied AC adapter, and then plug it into the outlet or USB supported devices.



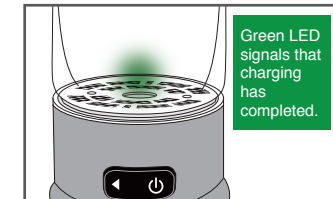
3) Please plug the inserting port of the supplied USB code properly into the cable entry of the socket.



**\*There is a specific direction for the inserting port of USB code. Please check before you plug in.**



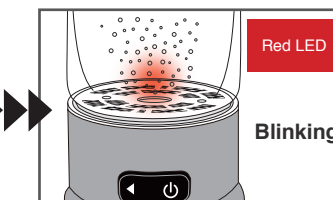
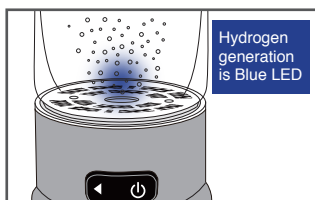
4) Charging starts once LED at the generator blinks in red.



5) Charging is completed once LED turns green.

**\*The time required for full charge is 3 to 4 hours.**

## Sign for the charge



The battery is running out when blue LED and red LED are alternately blinking during generation. Please start charging.